

G DATA ENDPOINT PROTECTION BUSINESS

THE ALL-ROUND, NO-FUSS PACKAGE: COMPLETE PROTECTION FOR NETWORKS OF ANY SIZE

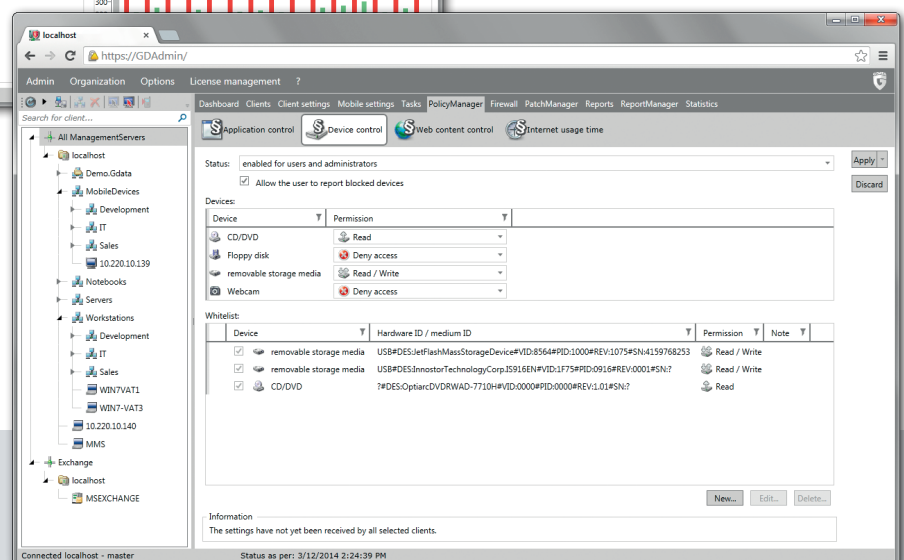
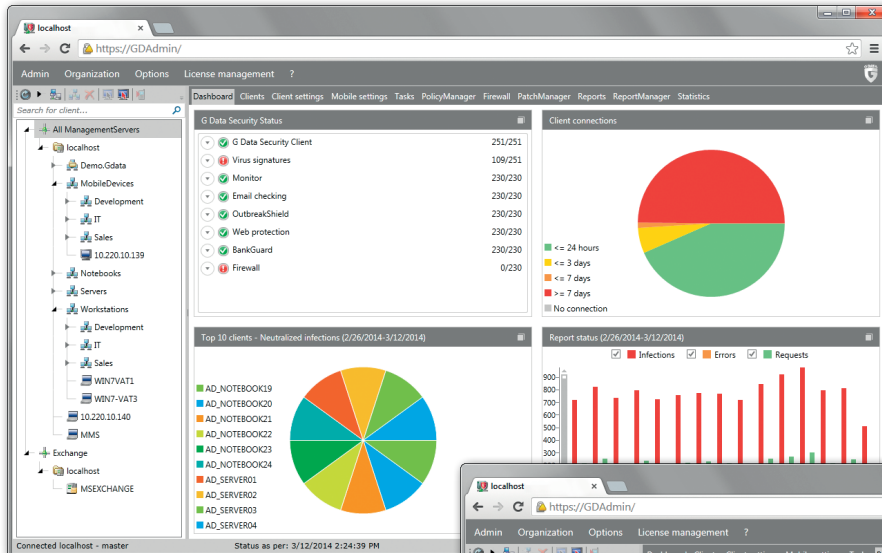
G DATA ENDPOINT PROTECTION protects you in various ways: maximum security through active hybrid protection using CloseGap technology, and the best reaction times to current threats.

Besides the Antivirus, Firewall and AntiSpam modules, the comprehensive Business solution has a PolicyManager module that controls internet usage and the use of programs and devices such as USB sticks, all in just a few mouse clicks.

About G DATA

G DATA has been carrying out research for 25 years for your security. The result is exceptional, comprehensive protection for your PC, which is easy to install, simple to operate and offers excellent performance levels.

That's **GERMAN SICHERHEIT.**



For more information, see
b2b.gdatasoftware.com





COMPLETE CLIENT PROTECTION

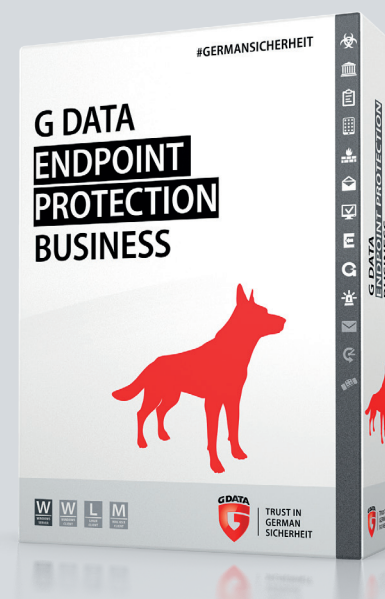
CloseGap hybrid technology	Maximum protection through proactive, signature-based detection
G DATA BankGuard 2.0	Secure online payment transactions - no browser add-on or additional software required
Behaviour monitoring of files	Even protects against unknown viruses
Integrated protection against spam and infected email	Add-on for Microsoft Outlook and POP3 and IMAP accounts
Powerful firewall	Monitors all incoming and outgoing connections, and protects against DoS attacks, port scans etc.
Antivirus for Linux clients	Also protects Linux computers in your company network against internet risks

CENTRAL ADMINISTRATION

Simple administration and fast overview	Manage installations, virus scans and authorizations for all clients centrally
Simplified installation overview	With status reports and installation history display
Re-engineered dashboard	For a user-friendly overview of all relevant information, including context-based help
Remote control	Also possible from anywhere via web interface - even from mobile browsers
Device control	Specify who is allowed to use USB sticks, storage cards or burners
Application control	Specify which programs are allowed to be installed or run
Surfing filter	Block any websites that are not connected with everyday work
Internet usage control	Surfing time, and start and end times can be specified as you want
ActiveDirectory connection	For transferring existing group structures and automated client installation
Mobile Device Management	Central administration of mobile Android devices, with theft protection, app checking, corporate telephone book, call filter etc.
Software and hardware directory	Detailed display of the entire inventory
English premium support	The development and support teams work closely together in Bochum - for the best, first-hand support, 24/7/365

OPTIONAL MODULES

MailSecurity	Mail server-independent, central gateway solution with virus and spam filter (SMTP/POP3) for any mail server such as Exchange, Notes etc. Includes plug-in for MS Exchange 2007 to 2013
Central client backups	Back up and manage the data on every company PC
PatchManagement	Centrally controlled software updates for all clients in the network
Antivirus for Mac	Also reliably protects clients with Mac OS in your network against viruses and other threats



System requirements

G DATA Security Client, ManagementServer,
G DATA MailSecurity (32 bit / 64 bit): systems
with Windows 8 / 7 / Vista / XP (32 bit only),
Windows Server 2003 / 2008 / 2012,
1 GB RAM or more

G DATA MailSecurity
(Microsoft Exchange plug-in, 64 bit):
Microsoft Exchange 2007 to 2013

CloseGap, G © 2013-14 G DATA Software AG. Android is a trademark of Google Inc. Use of this trademark is subject to Google Permissions. Microsoft®, Windows®, Windows Vista™, Windows® 8 and Windows® 7 are either registered trademarks or trademarks of Microsoft Corporation in the United States and/or other countries.